

Noda Campus



# Noda International Community House

Newly constructed within Noda Campus



**New open in April 2014!**

Location 2642-3 Yamazaki, Noda-Shi, Chiba-Ken (In Noda campus, Tokyo University of Science)  
 Structure 5-story steel concrete structure  
 Room Type Twin shared room (Bedroom: Single room designed)  
 Capacity International student shared room 10 rooms for 20 residents  
 Management live-in dorm managers  
 Security Floor security by the IC key

**Monthly Dorm Charge**

Wi-Fi Connection Fee: 3,080 yen (Tax included)  
 Utility Fee: 4,400 yen (Tax included)  
 Rent: 62,000 yen (Separate charge for meal service)  
 Management Fee: 10,000 yen  
 Total Amount: 79,480 yen

**Common Utilities**

Security: Auto-locking (IC key system), reception, security cameras, AED, emergency equipment  
 1F: Elevator, Mailbox Corner, Cafe Lounge, Vending machine, Printer, Dining Room, Kitchen Corner, Classroom 1・2, Japanese Style Room, Japanese Tea Ceremony Room, Public Bath (Unga no Yu), Relaxation Corner, Garden Terrace  
 Each floor: Community Room (Kitchen), Laundry Room (Washing machines・Dryers)  
 Other: Bicycle Parking Area, Garbage Disposal Place.

**Service**

Lending Equipment: Vacuum cleaner, iron, cooking tools  
 Meals: Breakfast & Dinner supply (Notification needed beforehand, separate charge)  
 Breakfast 350 yen・Dinner 650 yen (Tax excluded)  
 You may order a monthly-plan of the meals at 16,600 yen (Not served on Sundays & National Holidays)

“Noda International Community House” has opened in Noda campus in April, 2014.

It was established as a place of the student life fostering “the merit system” which is a tradition of the Tokyo University of Science (TUS), along with aiming at “Improvement of Community skill” and “Raising Global Human Resources” . By locating a range of public spaces on the 1st floor, the dormitory offers various students to interact with their peers freely.

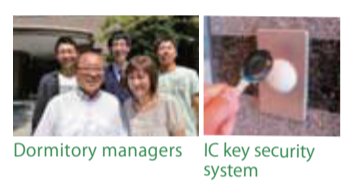
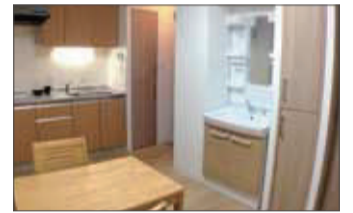
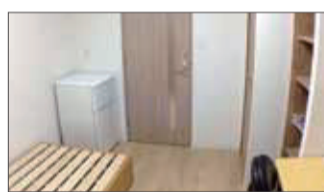
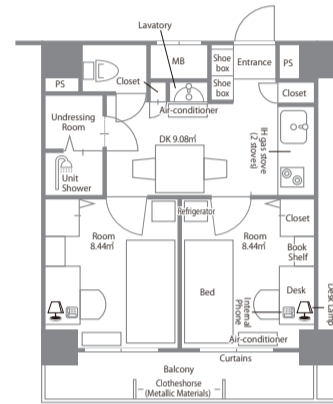
Likewise, a variety of Japanese and international students who are invited by interchange agreements with TUS live altogether, which offers outstanding international exchange experiences inside the dormitory.

Additionally, the dormitory also functions as a guest housing, which enables to communicate with foreign teachers.

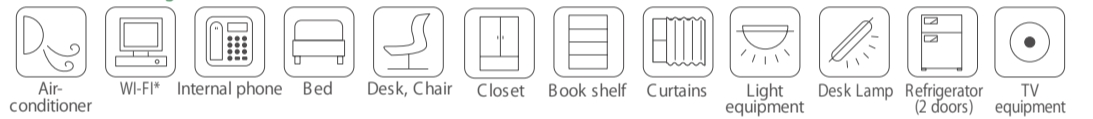
The International dormitory places a great emphasis on its security, by stationing the live-in dorm managers, the auto-lock entrance, and security cameras. Furthermore, breakfast and dinner can be provided, thus the dormitory keeps residents safe and comfortable in their daily lives.



**Share Room**



**Room Furnishings**



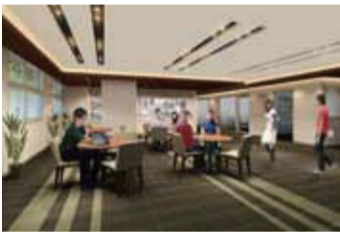
\*Available in the dormitory including residents' room

**1st floor**



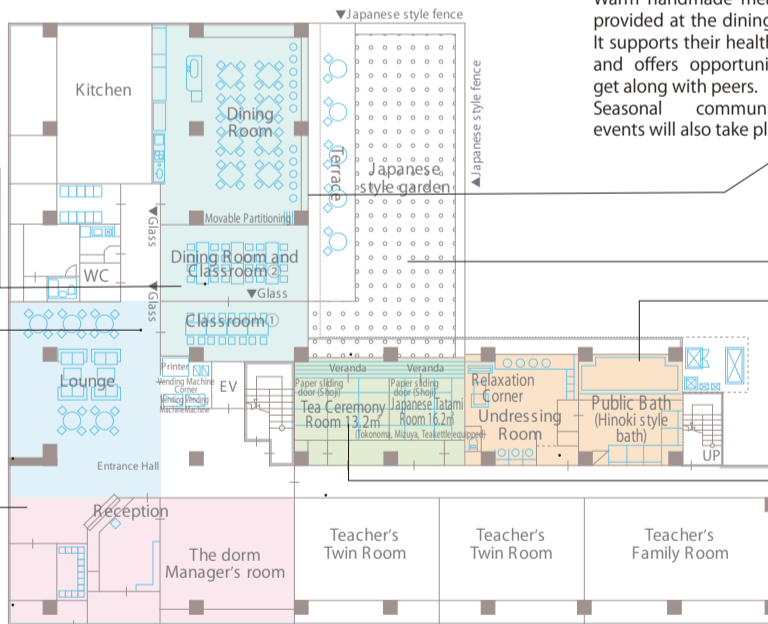
**Classroom**  
 Global Human Resource Raising Program will be held in the classrooms such as an English lesson.

**Communication Lounge**  
 The lounge offers a calm and relaxing space for all residents.



**Residents' safety**

The residents' safety is constantly protected by auto-locking and IC key systems, while live-in dorm managers provide hospitality and housing support. The dorm stores water-portable gas stoves-food for emergencies/disaster measures.



**Dining Room**  
 Warm handmade meals are provided at the dining room. It supports their healthy-lives and offers opportunities to get along with peers. Seasonal communicating events will also take place.



**Garden Terrace**  
 The garden is designed as modern Japanese style including bamboo forest, which offers a relaxing and peaceful space

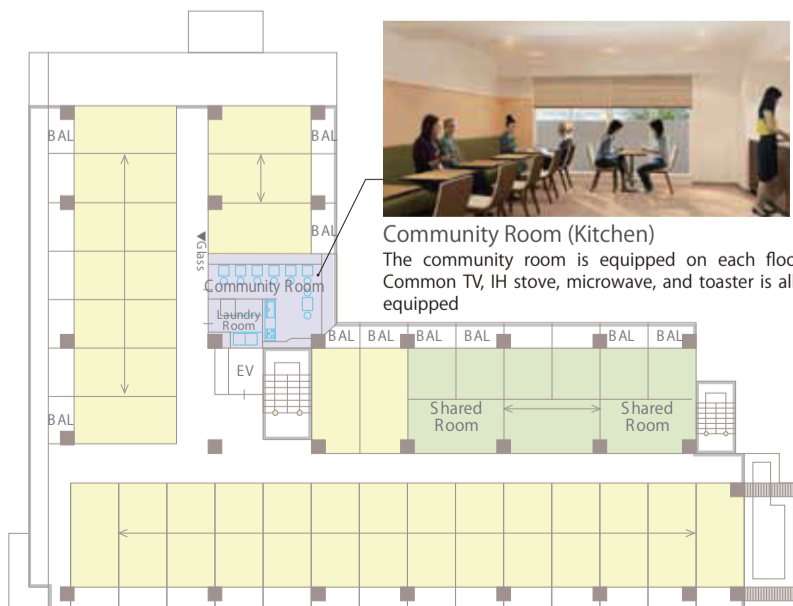


**Japanese Tatami room・Tea Ceremony Room**  
 The residents can attend tea ceremony-flower arrangement-dressing Kimono class in these rooms, obtaining Japanese traditional culture understanding.



**Hinoki style Public Bath (Unga no Yu)**  
 One of the major Japanese life styles, public bath, provides a comfortable place by interacting with peers and healing weary bodies.

**2F-5F** (Major floor layout 2-3F Male only / 4-5F Female only)



**Community Room (Kitchen)**  
 The community room is equipped on each floor. Common TV, IH stove, microwave, and toaster is all equipped

Within Noda Campus 10-min. walk from Unga station by Tobu-Noda Line

